



Tessa Stones

EMPOWERING SPACES

MARCH 2024

# ABOUT US

At Tessa Stones, we're passionate about sharing the beauty of quartz stone slabs with the world. As a company specializing in quartz slabs, we prioritize exceptional products by conducting extensive R&D, unmatched service, and competitive pricing. Trust is our core philosophy. With extensive industry experience, we ensure that every slab we supply meets high standards of quality and craftsmanship.



Transparency is the key as we provide detailed characteristics for informed decision-making. Our commitment to quality is unwavering—we meticulously inspect each slab for durability, aesthetics, and design consistency. Tessa Stones takes pride in personalized service, dedicated support, and a seamless buying experience.

# CHARACTERISTICS OF QUARTZ STONE SLABS

---

## DURABILITY

Composed of natural quartz crystals combined with resin and pigments, they are engineered to withstand daily wear and tear, making them highly resistant to scratches, stains, and impacts.

## VERSATILITY

With a vast array of colors, patterns, and finishes, quartz stone slabs offer limitless design possibilities. Whether contemporary or classic, these slabs can be customized to match your desired style effortlessly.

## HYGIENIC AND LOW MAINTENANCE

Quartz stone slabs are non-porous, stain-resistant, and easy to clean. Simply use mild soap and water for regular cleaning to maintain their pristine appearance and hygienic qualities.

These characteristics make quartz stone slabs a popular choice for a wide range of applications, including kitchen countertops, bathroom vanities, wall cladding, flooring, and more. Their combination of durability, versatility, low maintenance, and aesthetic appeal has made quartz stone slabs a preferred material for both residential and commercial projects.

## CONSISTENCY

Unlike natural stones that may exhibit variations in color and pattern, Quartz stone slabs are engineered to have a consistent appearance throughout the slab.

## HEAT RESISTANCE

Quartz slabs are heat-resistant, maintaining their durability and appearance when exposed to high temperatures. This quality ensures longevity, reducing the need for repairs and saving costs in the long run.

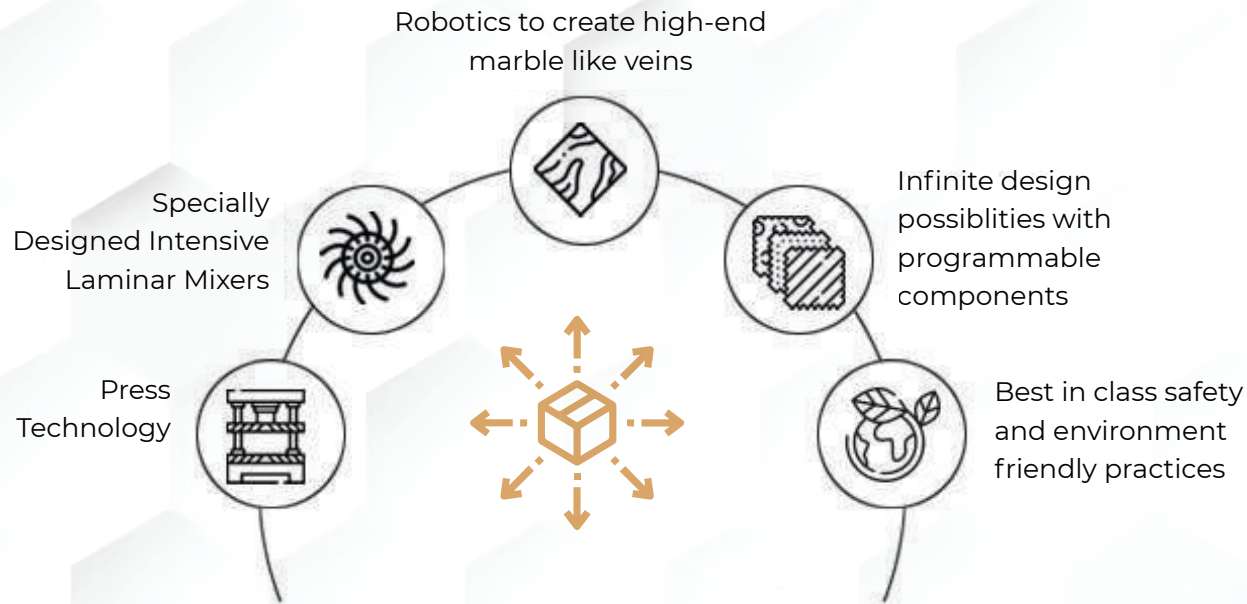
## STRENGTH AND FLEXIBILITY

Quartz stone slabs offer strength and flexibility, allowing for customization in size and shape. From countertops to backsplashes, these slabs can be tailored to your specific requirements.



# TECHNOLOGY

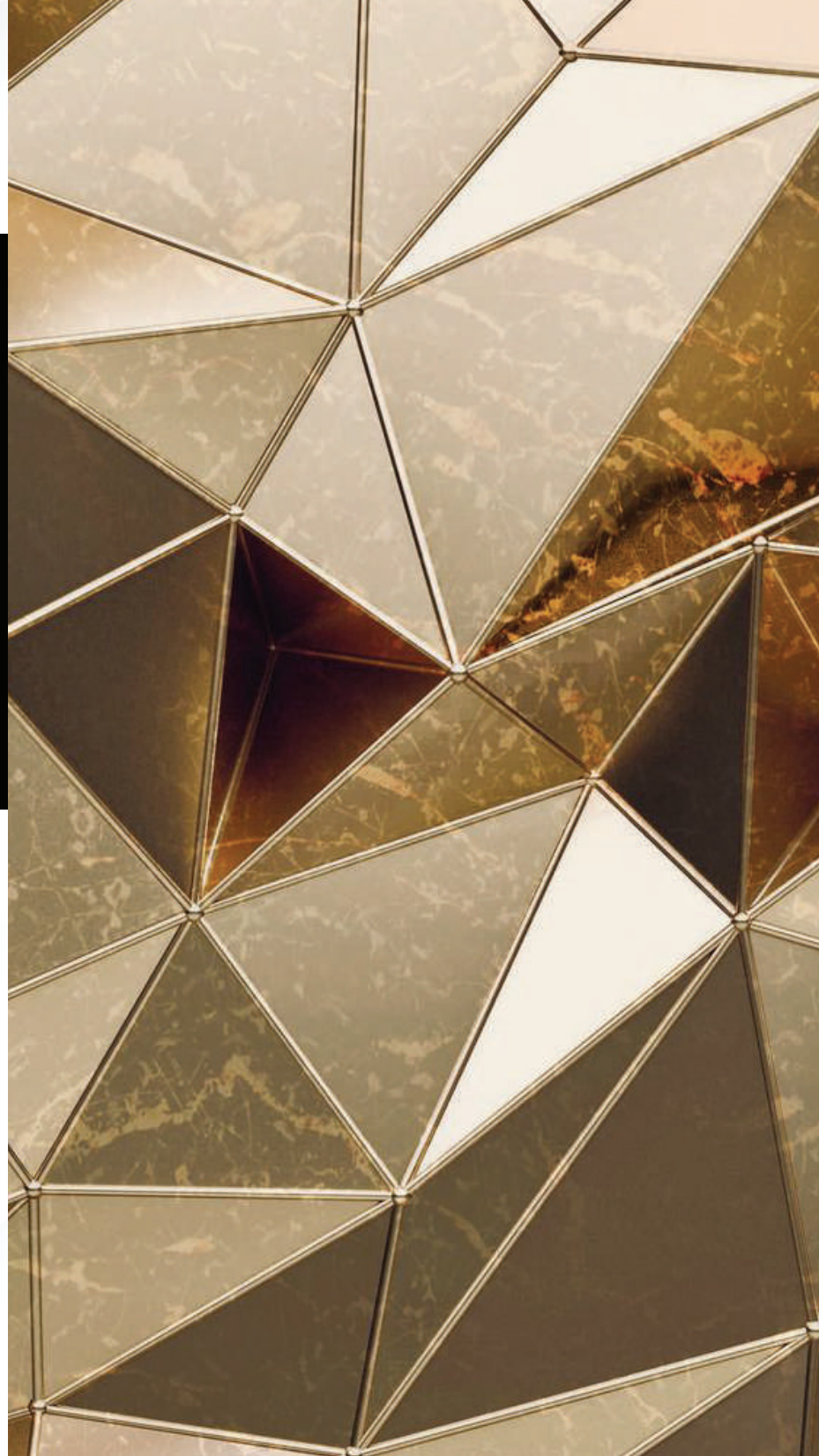
Be it quartz, resins or various additives, the state-of-the-art quality control laboratory keeps a diligent control over every input. High-end sieving and sorting equipment are used for controlling and grading the quartz powder and grains. Besides, the processes are seamless and integrated for quality across all stages - mix preparation, treatment, casting, hardening and slab finishing technologies & processes



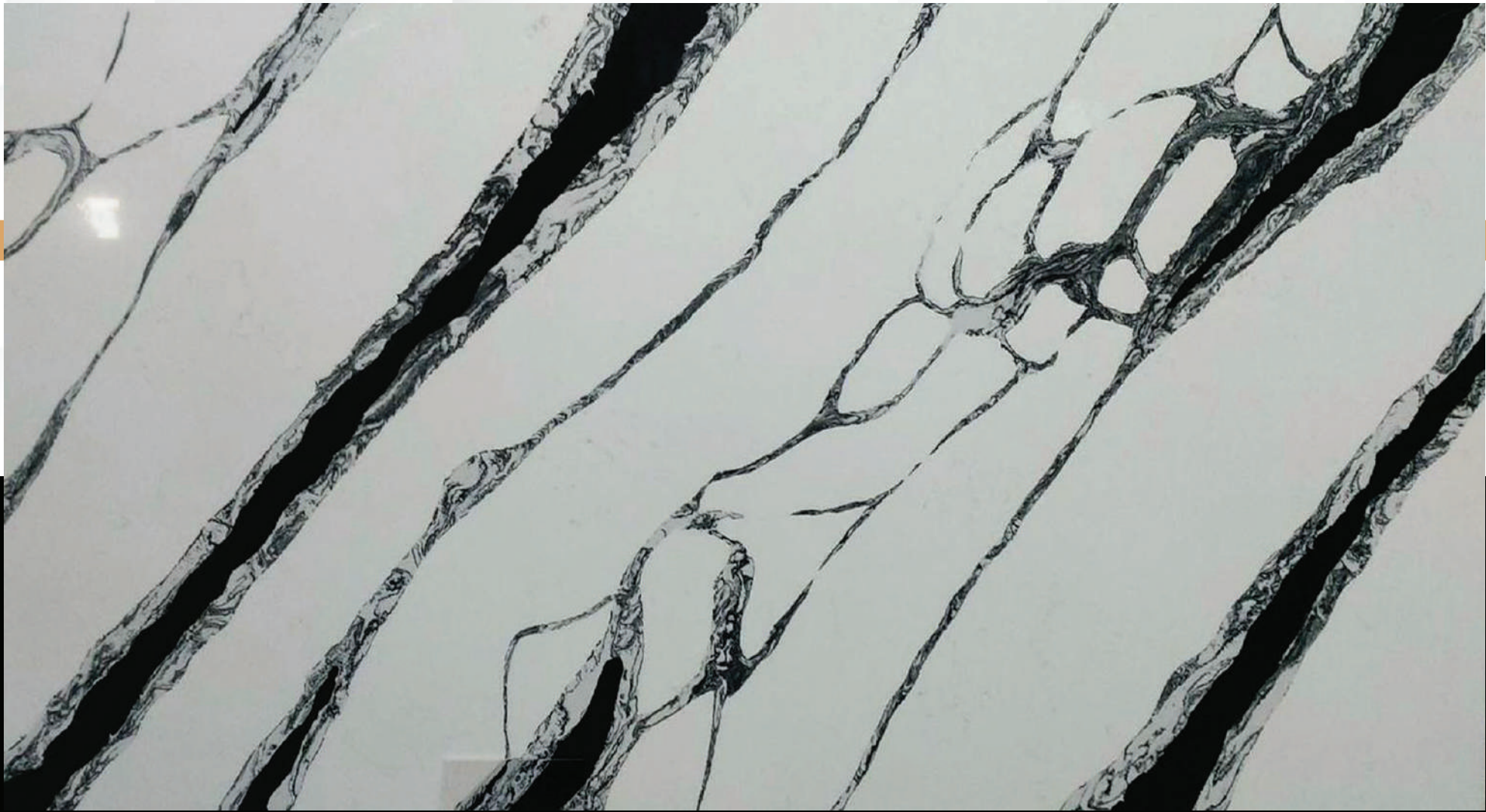
At Tessastones, we are proud to bring you quartz stone slabs manufactured using state-of-the-art technology. This cutting-edge manufacturing process sets our products apart, ensuring superior quality, durability, and affordability. With advanced machinery and automated processes, our quartz stone slabs are crafted with unparalleled accuracy. Every cut, shape, and polish is executed with meticulous precision, resulting in flawless slabs that meet the highest standards.

# EXCLUSIVE

“Detail between the ordinary and extraordinary.”







## Calacatta Eclipse

A pure white base adorned by bold and intricate black calacatta veining.

---



## Calcatta Riveria

Flowing through this elegant landscape are enchanting blue veins, mirroring the tranquil waves of the Riviera. The veins feature bold blue edges, fading blue body and Golden speckles sprinkled throughout.

---





## Calacatta Goldscape

A pristine white base adorned with intricate gold veiny calacatta pattern seamlessly intertwining with subtle grey veins.

---





## Calacatta Bluescape

A pure white base adorned by dominant blue calacatta veins. The striking blue hues seamlessly blend with accents of gold and subtle grey veins, creating a mesmerizing interplay of colors

---



## Calacatta Greenscape

A refreshing pristine white base adorned by dominant green calacatta veins. The lush green hues seamlessly blend with accents of radiant gold and subtle grey veins, creating a harmonious fusion of colors.

---



## Calacatta Dunes

A luxurious, pristine white base with bold and intricate golden veins that meander across the surface in a captivating display.





## Midnight Rumble

Striking blend of a rich black base and delicate black-and-white pattern in exclusive matt finish.

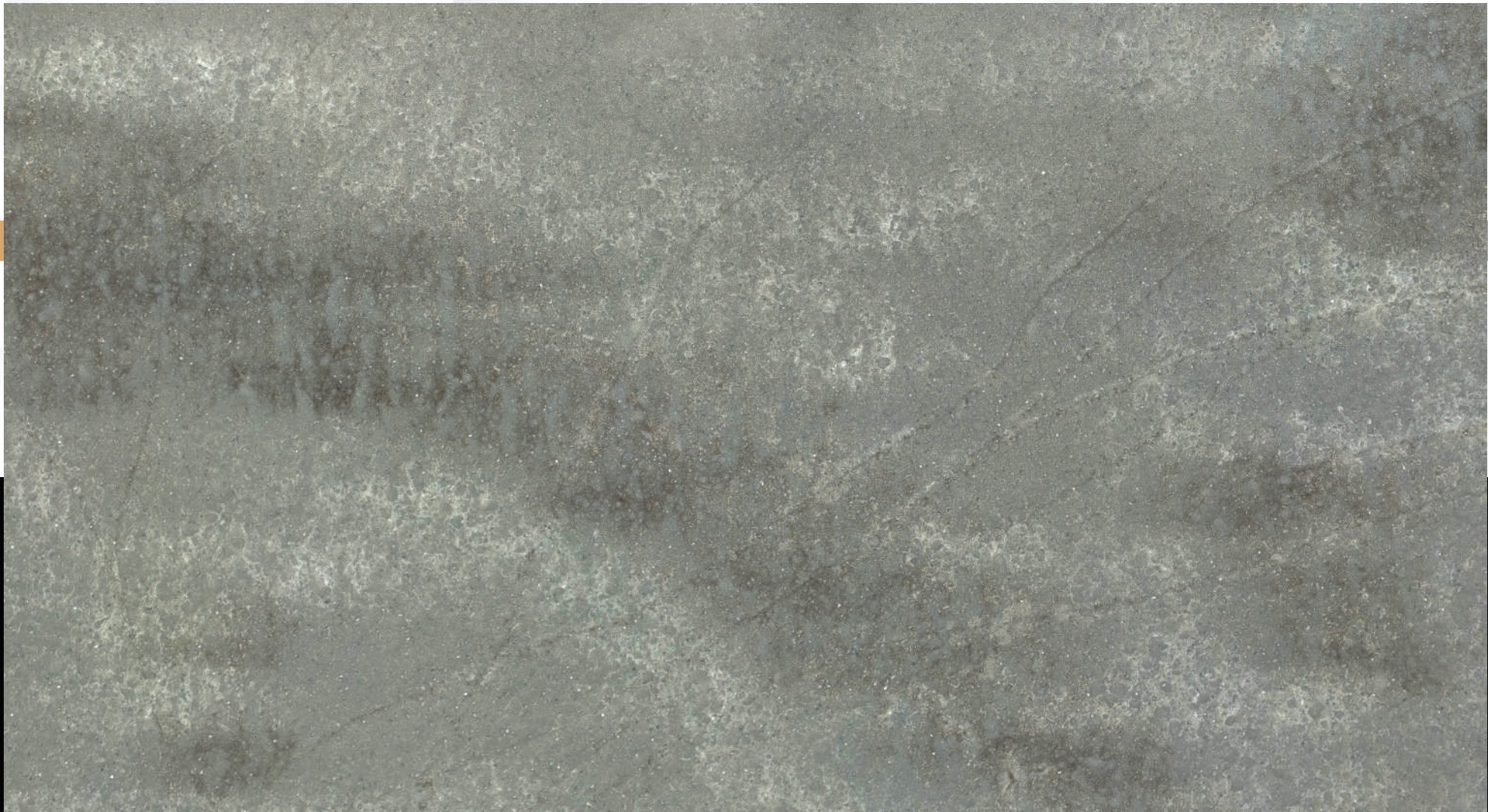
---



## Verdant Harmony

Introducing Verdant Harmony, a quartz stone slab with a captivating emerald green background adorned by intricate golden patterns.





## Patina Gray

A sparkling serene gray composition featuring a balanced fusion of rustic brown and deep white veining.

---



# LUXURY

Luxury collection exudes premium-quality, stunning aesthetics and exceptional craftsmanship.

“Real luxury require real materials and a genuine craftsmanship.

-Christian Dior





## Calacatta Goldstream

A radiant white canvas enriched by the allure of captivating gold veins. The bold, flowing gold veins meander across the surface, creating a dynamic and visually captivating pattern

---



## Calacatta Gale

A pristine white canvas brought to life by sweeping veins in shades of gold and gray, creating a dynamic and flowing pattern.

---

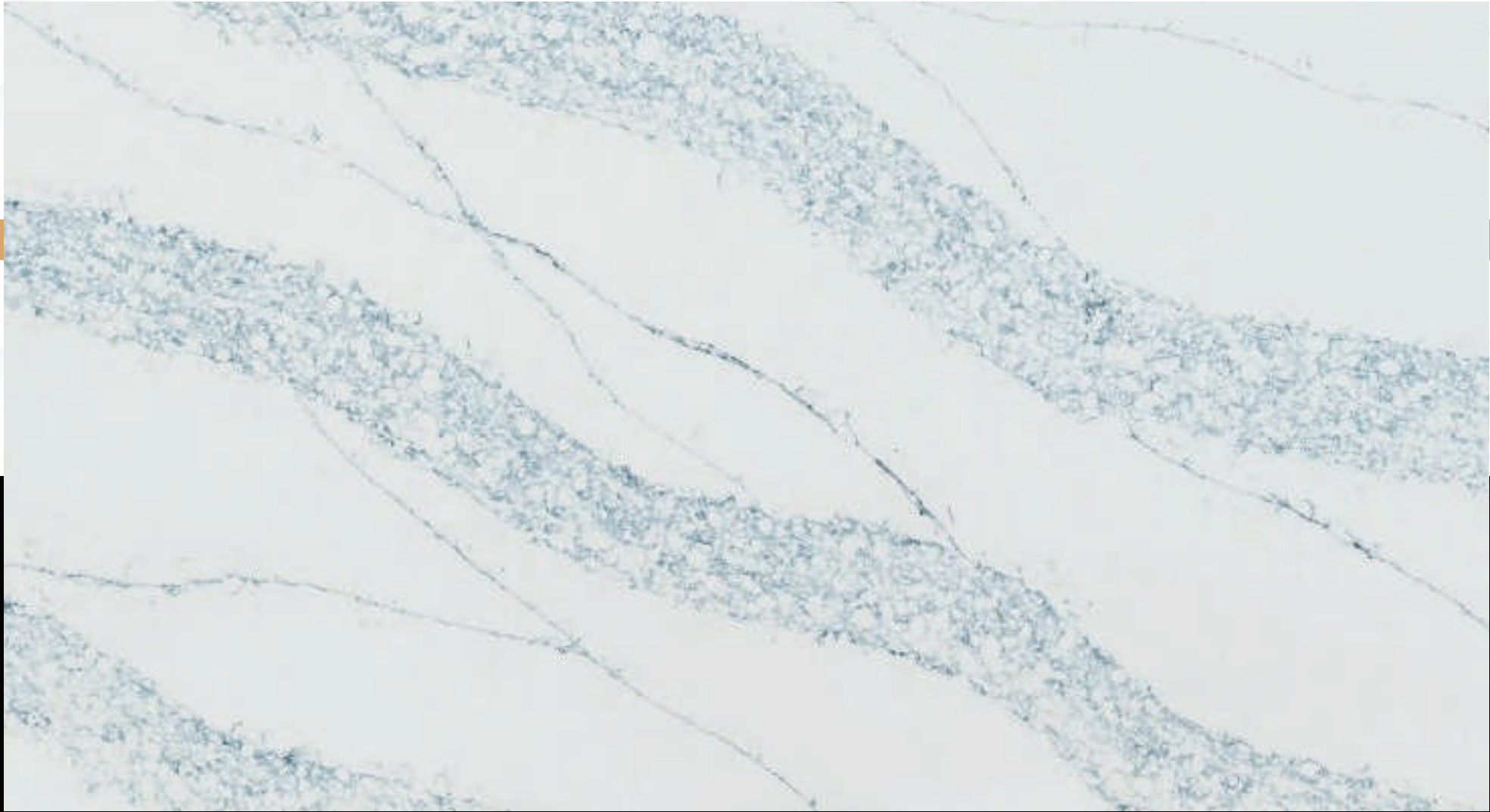




## Calacatta Horizon

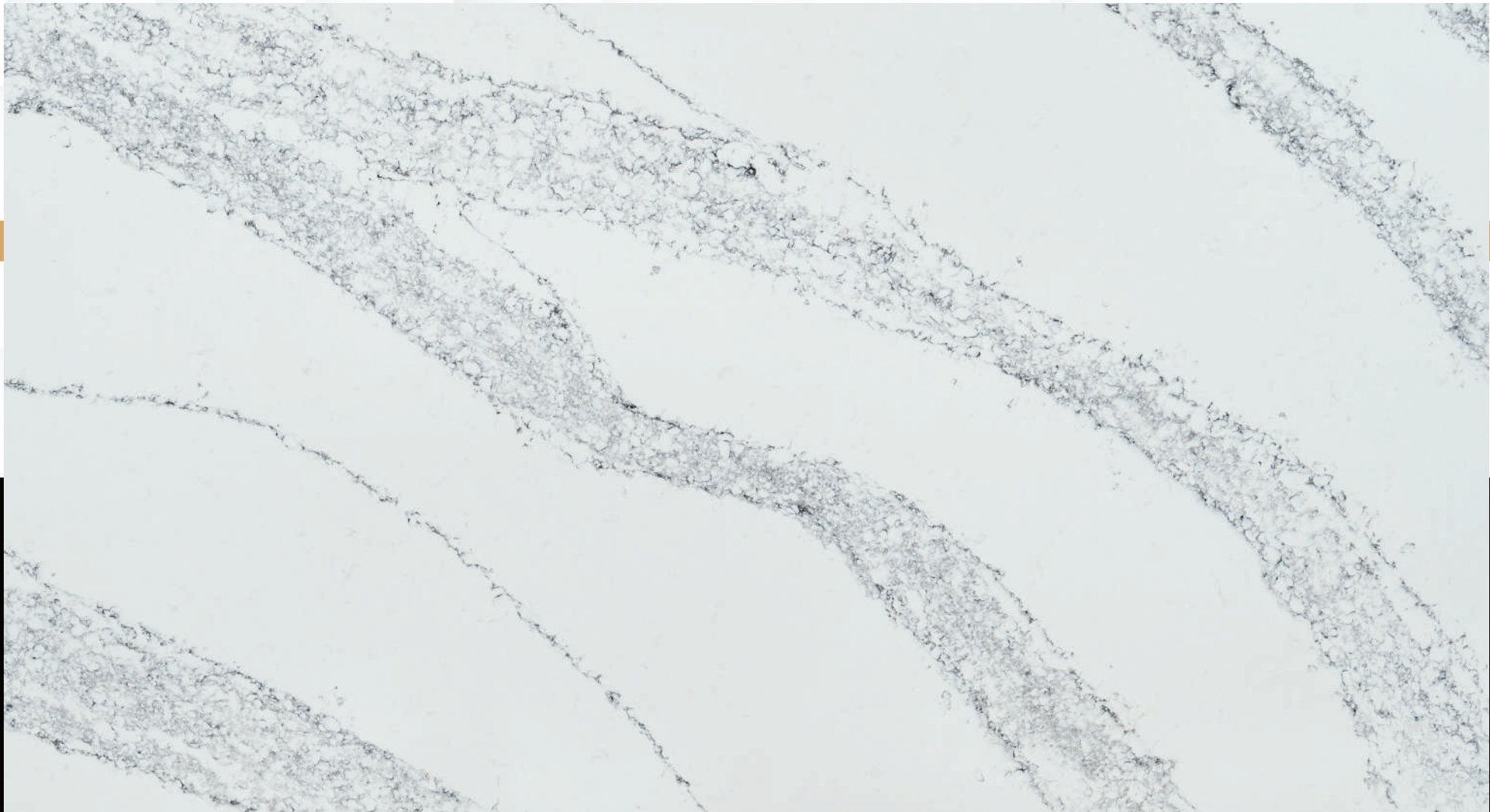
A warm white backdrop, subtle gray waves, and opulent veins in golden and olive green

---



## Calacatta Lagoon

A sleek, high-gloss surface in serene white, adorned with bold blue veins flowing like waves, intertwined with delicate, elongated connections.



## Arctic Drift

Sleek white surface featuring ultra-smooth texture and high glossiness, adorned with deep charcoal streaks.

---



# ELITE

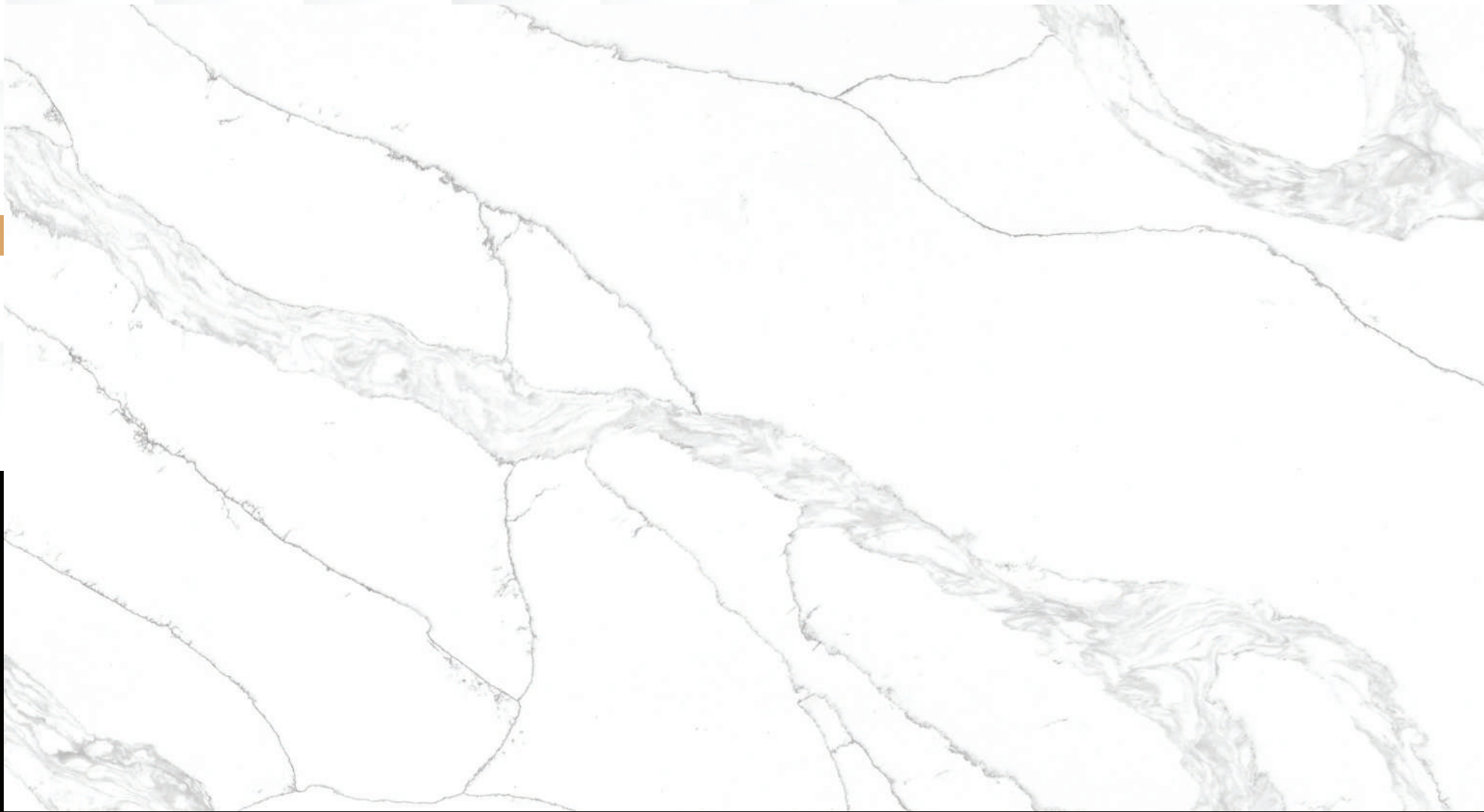
Shades of gray intermingled in a marble-esque design with brief charcoal streaks



You are magnificent  
beyond measure.”

-Abiola Abrams

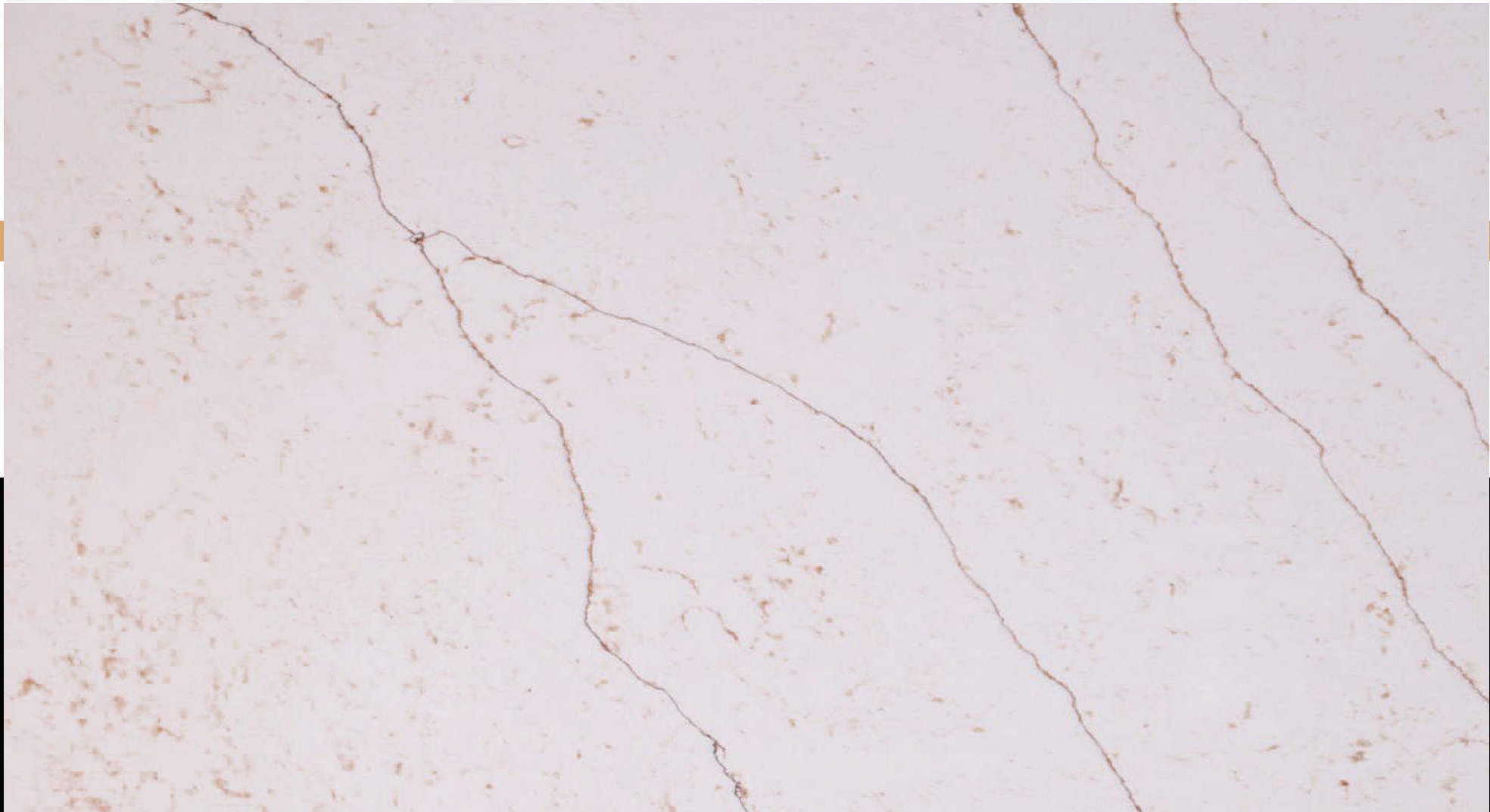




## Misty Stream

A pure white canvas with beautifully spread gray calacatta veining.





## Sienna Statuario

A pristine white base adorned with graceful, sinuous brown veins and delicate spots.

---





## Gold Royale

A white canvas embellished with elegant, elongated gold streaks.

---



## Bianco White

Bianco White is highlighted by brief brownish-gray streaks and echoes the refined beauty of Bianco Marble.





## Drizzly White

With a smoky white base, it features long, diagonal grey vines.







## Champagne Opalite

A stone of opulent beauty, featuring a translucent creamy beige base adorned with delicate golden and white streaks.

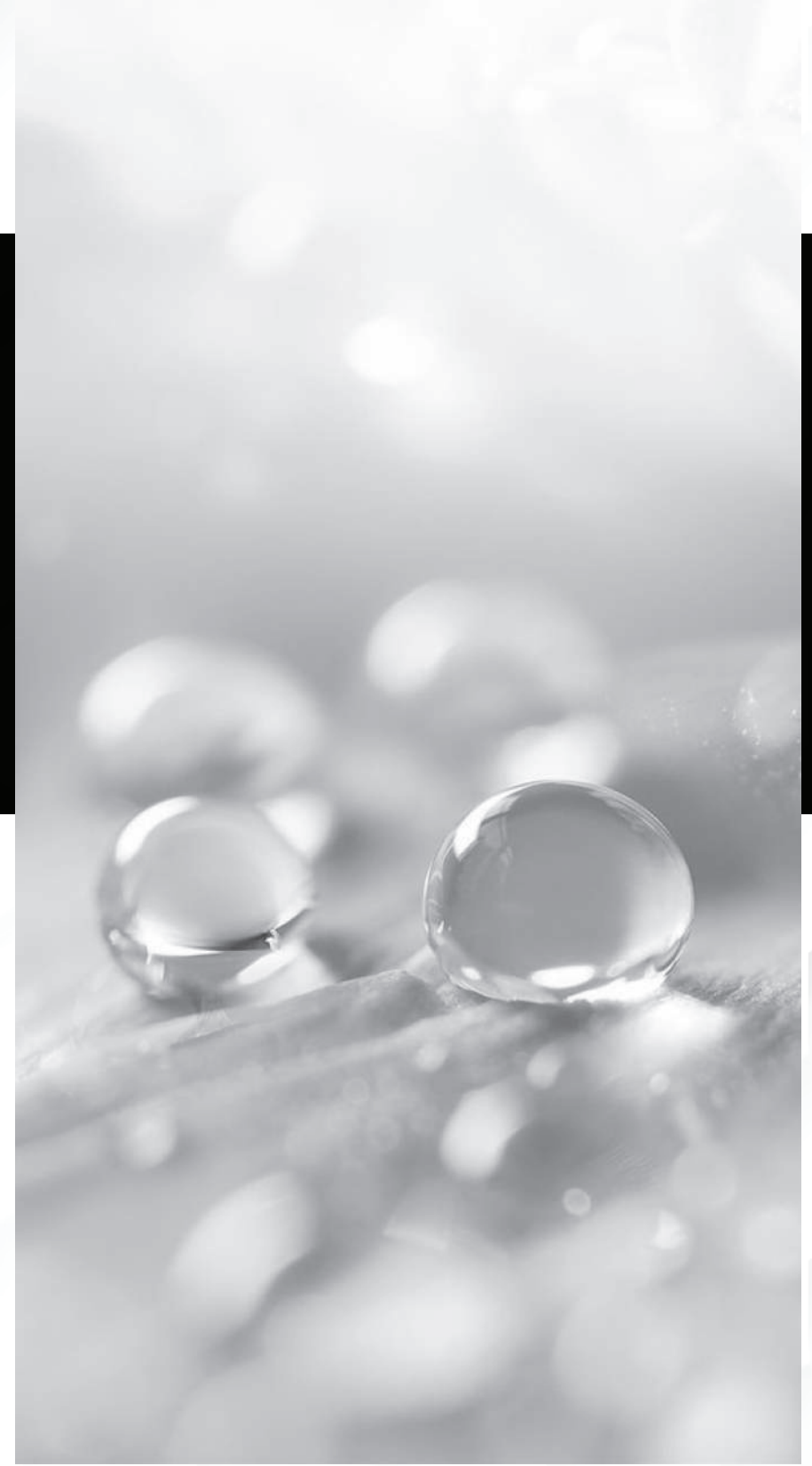
---

# EDEN

The Eden range embodies joy and ecstasy, representing these positive emotions. This range is a manifestation of happiness, evoking feelings of pure bliss and delight.

“The elusive gift of blending austerity of craft with elasticity of allure.

-Joyce Carol





# Siberian White

A white surface that possesses a mysterious charm with its impeccably pristine appearance.







## Sierra White

A mesmerizing stone with a pristine white base adorned by blue-gray veins. Inspired by the grandeur of mountain landscapes, this stone exudes a sense of tranquility and elegance.

---



## Ivory Haze

Exceptionally elegant white base featuring a silky-smooth feel and radiant shine, complemented by gentle rustic gold streaks.

---

# CLASSIC BLEND

Exuding a refined aesthetic, this collection features subtly crafted designs, providing a premium touch for those with discerning sensibilities.

“Elegance is the only beauty  
that never fades.

-Audrey Hepburn







## Rann Of Kutch

Rann of Kutch color embodies the essence of pristine river banks with its timeless snow-white background.





## Moon White

A timeless charm with its predominantly white canvas,  
gently adorned by subtle grains.





## Silent Gray

With its flawless gray hue, it adds timeless appeal to any design style.





A modern kitchen featuring a large white marble island with a gold faucet and a double sink. The island is surrounded by white bar stools. In the background, there are light green cabinets, a stainless steel oven, a microwave, and a large stainless steel refrigerator with a water dispenser. Four pendant lights with clear glass globes hang from the ceiling. A white door is visible in the background, leading to another room.

## **Tessa Stones Inc.**

[info@tessastones.com](mailto:info@tessastones.com)

[www.tessastones.com](http://www.tessastones.com)

***You can visit us at***

108 Gazza Blvd, Farmingdale,  
New York 11735